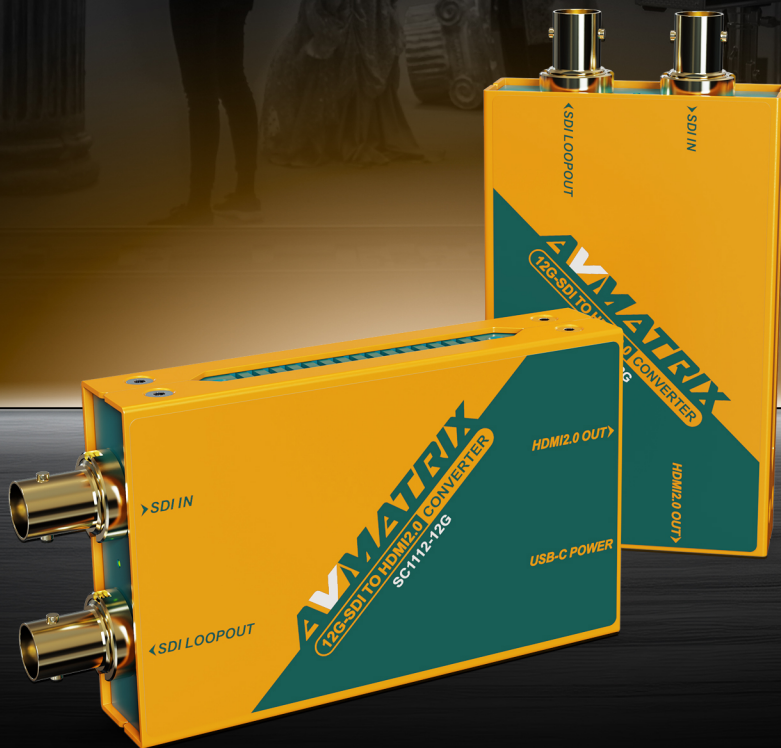


12G-SDI TO HDMI2.0 4K BR@DCAST CONVERTER

Effortlessly converting 4K broadcast quality, bringing every frame to life with unmatched clarity.



SC1112-12G

Model No.:



Up to 4K 60Hz



12G-SDI to HDMI2.0



Power over USB-C



Auto-detect

Convert 12G-SDI to HDMI2.0



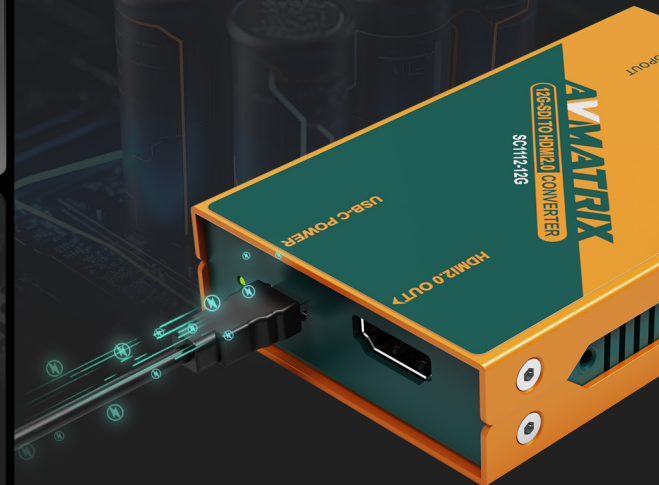
12G-SDI Loop-out



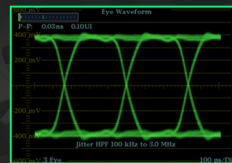
Up to 4K60 Resolution



USB Type-C Powered Anywhere



Widespread Application



SDI with Equalization and Re-clock



Convert 12G-SDI to HDMI2.0

Broadcast Converter with No Latency

This compact converter provides 12G-SDI and 4K HDMI interfaces, supporting HD/3G/6G/12G-SDI input formats. It enable direct conversion with unparalleled zero latency, making it the perfect choice for broadcast applications demanding uninterrupted, high-performance signal transmission.

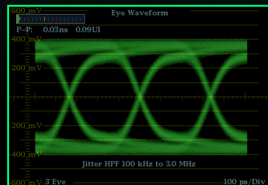
12G-SDI In and Loop-out

SDI with Equalization and Re-clock

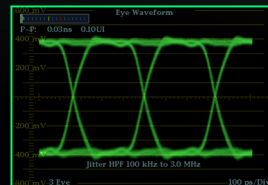
The converter has a 12G-SDI loop-out that can transmit the SDI video to an additional display directly. It allows users to output to two screens simultaneously for monitoring.



Before Re-clocking



After Re-clocking



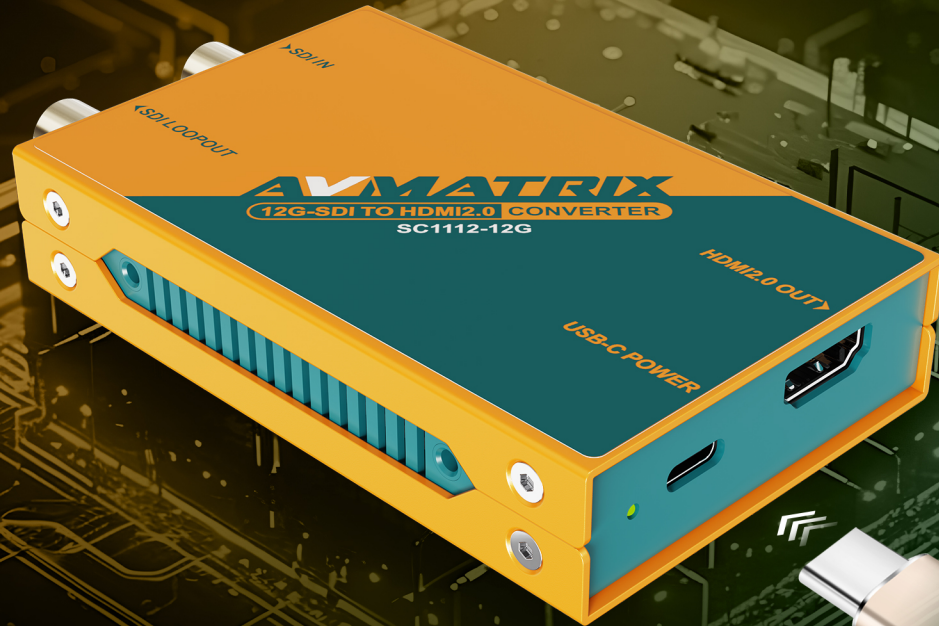
4K@60 Resolution Support

4k Ultra HD Quality

The converter features advanced auto-detection technology, seamlessly matching your SDI input to the HDMI output. It supports a wide range of input and output resolutions, including crystal-clear 4K@60 (4096*2160).

4096x2160





USB Type-C Power

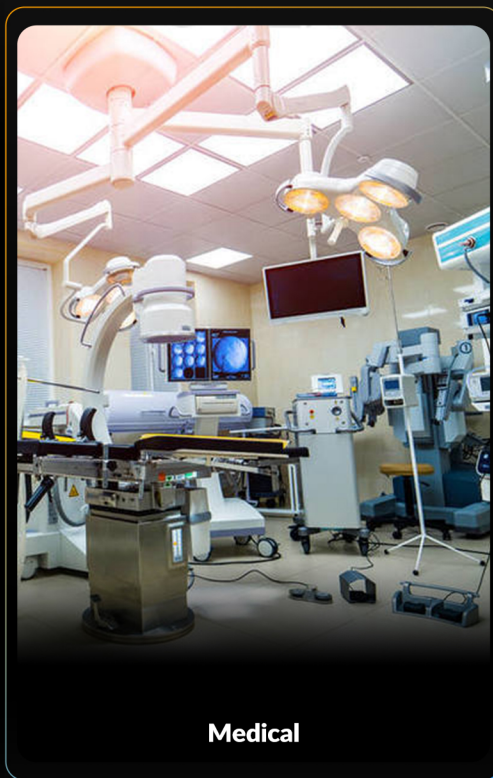
Power Supply Anytime, Anywhere

Featured with USB Type-C 5V power, the converter can be powered by USB Type-C, getting power from power bank, power adapter. In addition to power supply, USB Type-C allows upgrading firmware and checking program version.

Widespread Application

Universal Industry Solution

The converter can be widely used in various field events, such as live broadcast, virtual studio, education, conference, and so on.



SPECIFICATIONS

INPUT

SDI Video Input HD/3G/6G/12G-SDI×1

OUTPUT

SDI Video Loop Output HD/3G/6G/12G-SDI×1

HDMI Video Output HDMI2.0×1

SDI FORMATS

SDI Input Format

(12G) 4096x2160p 60/59.94/50
 (12G) 3840x2160p 60/59.94/50
 (6G) 4096x2160p 30/29.97/25/24/23.98
 (6G) 3840x2160p 30/29.97/25/24/23.98
 (3G level-A) 1920x1080p 60/59.94/50
 (3G level-B) 1920x1080p 60/59.94/50
 (HD) 1920x1080p 30/29.97/25/24/23.98
 (HD) 1920x1080i 60/59.94/50
 (HD) 1920x1080Psf 30/29.97/25/24/23.98
 (HD) 1280x720p 60/59.94/50/30/29.97/25/24/23.98

SDI Video Rate HD/3G/6G/12G-SDI

SDI Compliance SMPTE ST-2081, SMPTE ST-2082, SMPTE 292M, SMPTE 296M

SMPTE 424M-B, SMPTE 274M, SMPTE 425M

SDI Color Space and Precision YCbCr 4:2:2 10bit

SDI Auto Switching Auto selects HD/3G/6G/12G-SDI input

HDMI FORMATS

HDMI Output Format

(4K) 4096x2160p 60/59.94/50/30/29.97/25/24/23.98
 (4K) 3840x2160p 60/59.94/50/30/29.97/25/24/23.98
 (HD) 1920x1080p 60/59.94/50/30/29.97/25/24/23.98
 (HD) 1920x1080i 60/59.94/50/48/47.98
 (HD) 1280x720p 60/59.94/50/30/29.97/25/24/23.98

HDMI Color Space and Precision RGB 8bit, YCbCr 4:2:2 8bit, 10bit, 12bit, YCbCr 4:4:4 8bit

HDMI Compliance CTA-861-G

POWER

Power USB Type-C

Power Consumption ≤4.5W(5V 0.9A)

Voltage Range 5V

OTHER

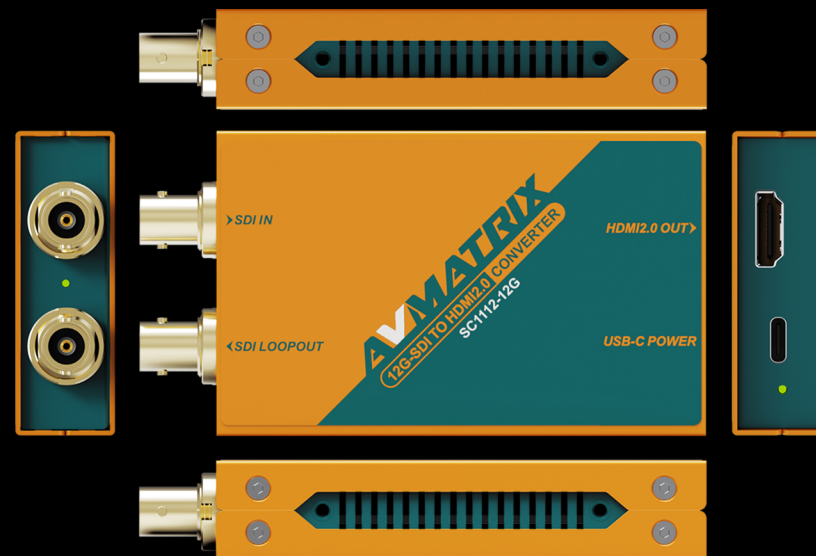
Dimension (LWD) 107.6×58×19mm

Weight 235g

Operating Temperature 0~60°C

Storage Temperature -20~70°C

Relative Humidity 0%~90% non-condensing



ACCESSORIES

